

# GFMD Thematic Workshop on “Children and Youth on the Move : Implementing Sustainable Solutions”

21-22 June 2018, Agadir, Morocco

## Session 1:

### Data to Protect, Data to Inform, data to Deter?

Thailand



Presented by  
*Hataichanok Puckcharern*

# Topics

- **The Role of NSO**
- **Mechanism of the Implementation of the Thailand Statistical Master Plan**
- **National Mechanism for Sustainable Development**
- **Data sources relevant to migration in Thailand**

# The Role of NSO (by the 2007 Statistical Act)

## Statistics production (statistics & indicators)

Produce basic information from

- **Censuses**
  - Population and Housing Census
  - Agricultural Census
  - Business and Industry Census
- **Surveys**
  - Economic
  - Social
  - Public opinion
- **Compiling national development indicators**
  - from NSO
  - from other agencies

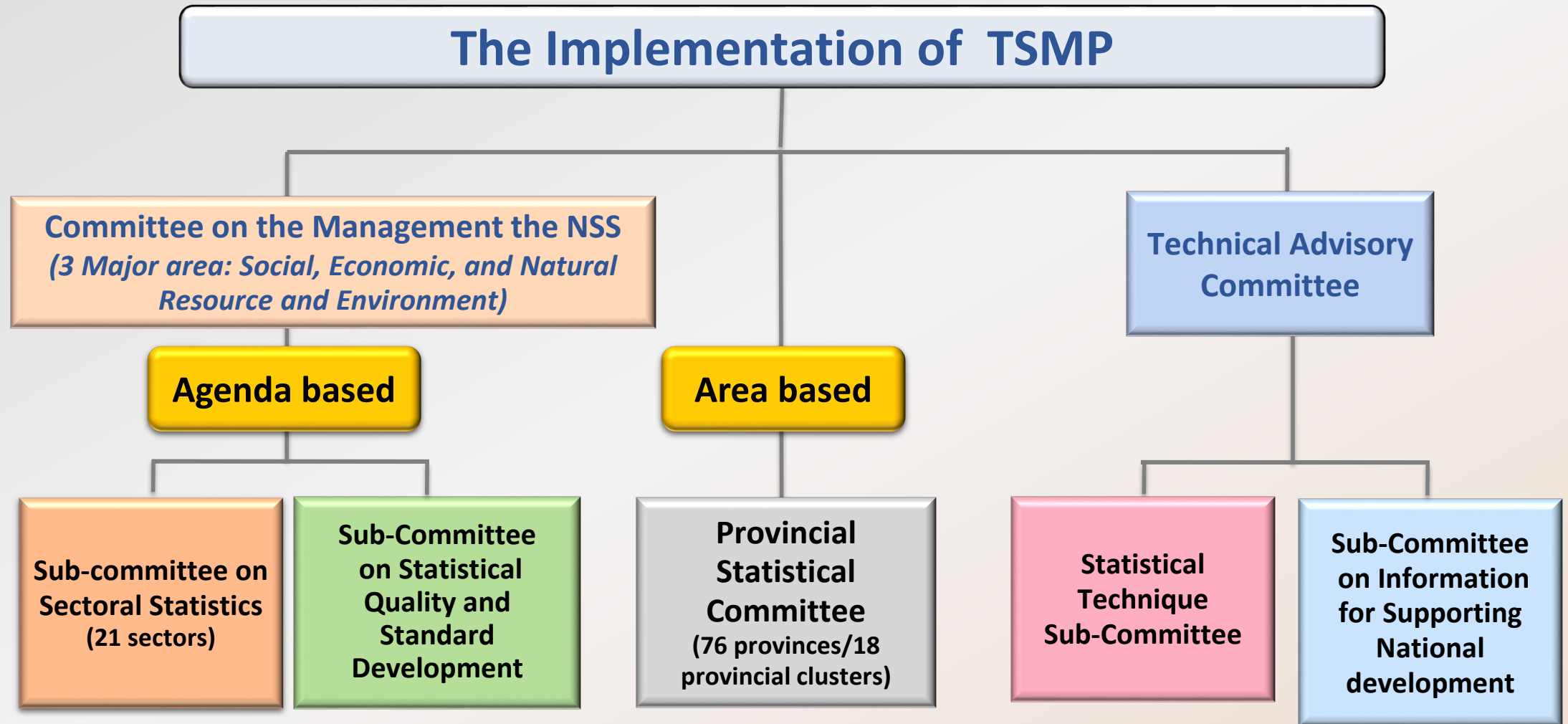
## Statistical services

- **Advisory service in statistical technique**
- **Training (In-house and line ministries)**
  - Statistics
  - Computer programs related to statistical data processing and analysis.
- **Collaboration in statistical matter (National/International)**
- **Statistical output (publication, CD-Rom, website, micro-data, etc)**

## Management of national statistical system

- **Set up national statistical master plan**
  - Set up official statistics for decision making in the country development
- **Establish statistical standard and quality management plan and framework**
  - OS quality management
  - OS statistical standard  
*(definition, classification for occupation/industry/education, ..)*
- **Statistical Information Integration and Sharing**
  - develop a statistical information integration and sharing system.

# Mechanism of the Implementation of the TSMP

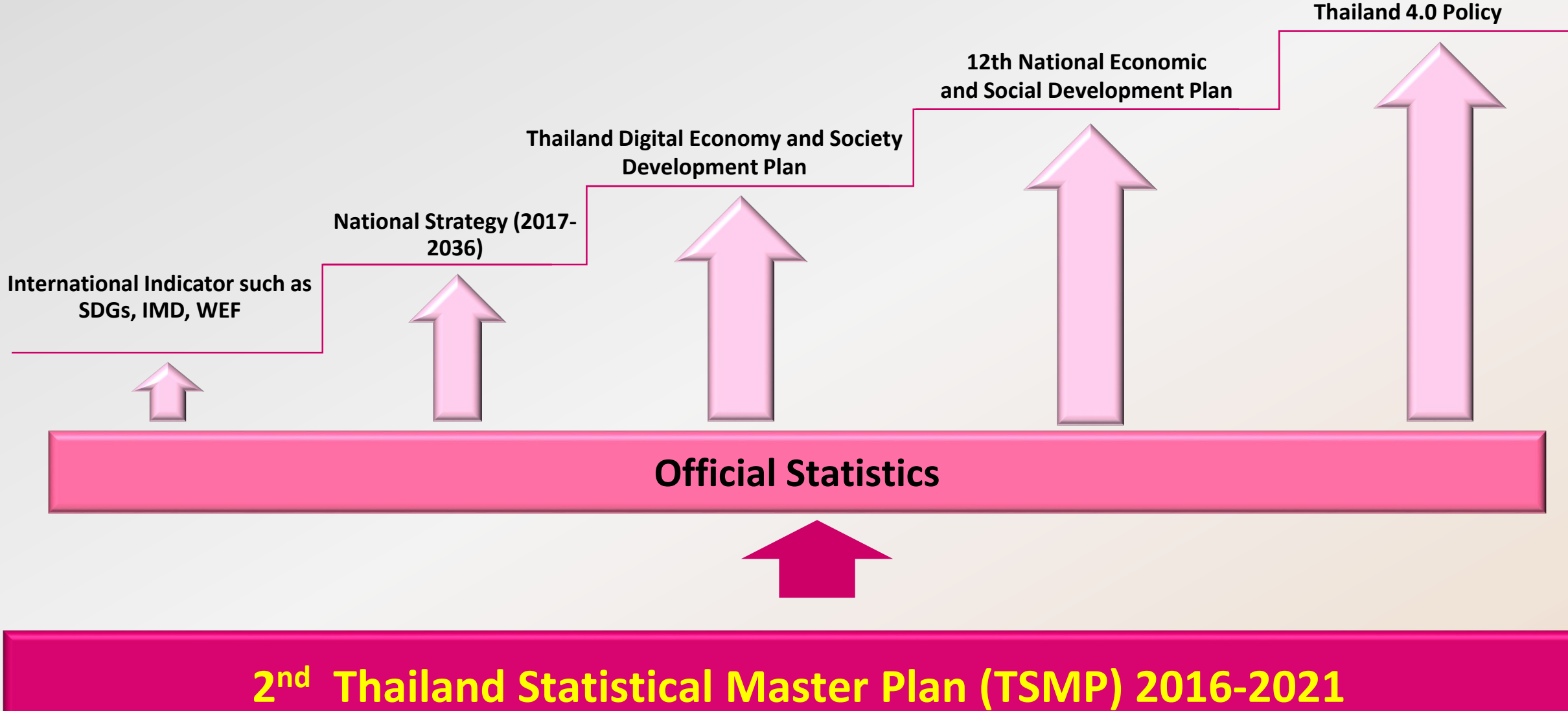


# Mission of the 2<sup>nd</sup> TSMP 2016-22

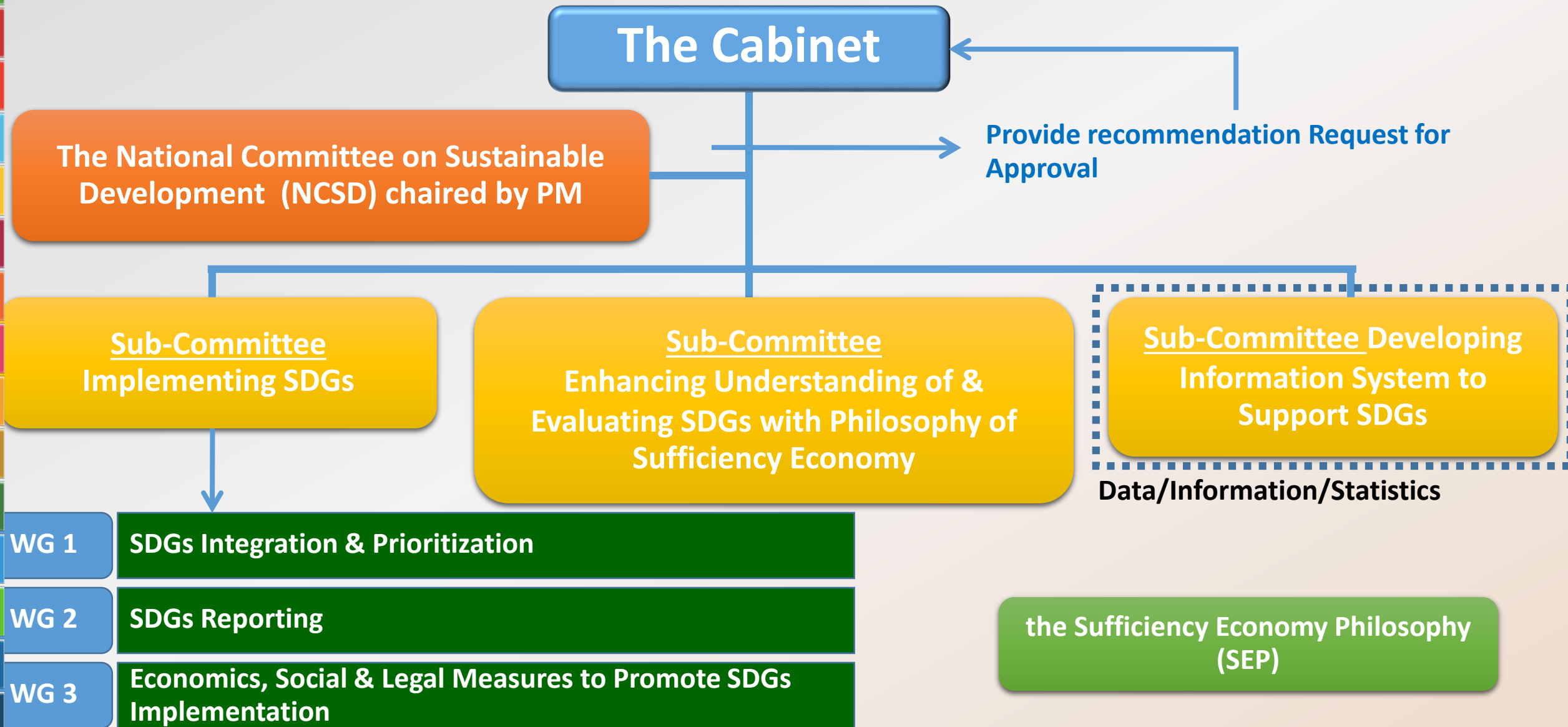
- Manage national statistical system
- Promote the statistical production in accordance with the international quality standards
- Promote the services of statistical data



# Result of the 2<sup>nd</sup> TSMP 2016-22



# National Mechanism for Sustainable Development



# Data sources relevant to migration in Thailand

Data Sources	
Administrative data	<ul style="list-style-type: none"><li>• Civil registration</li><li>• Foreign workers registration</li><li>• Social insurance record</li><li>• Immigration registration</li><li>• Others : health, education, social and human security</li></ul>
Census and sample survey data	<ul style="list-style-type: none"><li>• Population and Housing Census</li><li>• Labor Force Survey</li><li>• National Working Children Survey</li><li>• Migration Survey</li><li>• MICS</li><li>• Informal Employment Survey</li></ul>



# Data sources relevant to migration in Thailand

Topics	Possible data sources	
Poverty	<ul style="list-style-type: none"> <li>household survey</li> </ul>	<ul style="list-style-type: none"> <li>people below the international poverty line</li> </ul>
Social protection	<ul style="list-style-type: none"> <li>administrative data from relevant government agencies : i.e. M.of Labor, M.of Social Development and Human Security, M.of Education, M.of Public Health, M.of Interior</li> </ul>	<ul style="list-style-type: none"> <li>people covered by social protection floors</li> </ul>
Health	<ul style="list-style-type: none"> <li>administrative data from M.of Public Health</li> </ul>	<ul style="list-style-type: none"> <li>maternal mortality ratio</li> <li>under-five mortality rate</li> </ul>
Access to services	<ul style="list-style-type: none"> <li>administrative data from relevant government agencies : i.e. Ministry of Interior, Ministry of Public Health</li> </ul>	<ul style="list-style-type: none"> <li>children under 5 years of age whose births have been registered with a civil authority</li> </ul>
Education	<ul style="list-style-type: none"> <li>administrative data from relevant government agencies : i.e. Ministry of Education, Ministry of Labor</li> <li>household survey : Reading Survey</li> </ul>	<ul style="list-style-type: none"> <li>formal and non-formal education and training</li> <li>(a) literacy and (b) numeracy skills</li> </ul>

# Data sources relevant to migration in Thailand

Topics	Possible data sources	
Work	<ul style="list-style-type: none"><li>• administrative data from relevant government agencies : i.e. Ministry of Public Health, Ministry of Labor</li><li>• household survey : Labor Force Survey</li></ul>	<ul style="list-style-type: none"><li>• women in managerial positions</li><li>• Average hourly earnings of female and male employees</li><li>• Unemployment rate</li><li>• Frequency rates of fatal and non-fatal occupational injuries</li></ul>
Peaceful and inclusive society	<ul style="list-style-type: none"><li>• administrative data from relevant government agencies : i.e. Ministry of Social Development and Human Security, the Royal Thai Police</li><li>• household survey : Ministry of Social Development and Human Security plans to conduct the violence against women</li></ul>	<ul style="list-style-type: none"><li>• population subjected to physical, psychological or sexual violence</li><li>• victims of human trafficking</li></ul>
Reduce inequality	<ul style="list-style-type: none"><li>• needs to be explored</li></ul>	<ul style="list-style-type: none"><li>• Recruitment cost</li><li>• Remittance costs</li></ul>



Thank you